



clearcurrent[®] PSY+ vCell

HEPA Filtration

CLARCOR Industrial Air's clearcurrent filter business offers extremely high levels of gas turbine protection in a wide range of environments with its selection of inlet filters. Our 40 years of expertise in gas turbine air intake design has influenced the development of this water-resistant HEPA rated filter. Its high dust holding capacity helps prolong filter life and significantly lowers operating costs. The filter is designed for low pressure loss to enable improved power output. Available in industry-standard sizes, the PSY+ is suitable for all GT OEM filter houses.

Key Benefits

- Increased MW output
- Lower heat rate
- Filter provides hydrophobic performance for superior protection in wet environments
- Minimized compressor blade fouling
- Excellent sub-micron particulate removal performance
- Extended gas turbine availability
- Reduced cold & hot end corrosion

PRO – Predictable, Reliable Output

The clearcurrent PRO SY+ filter delivers Predictable, Reliable Output for your Gas Turbine while maintaining steady inlet pressure loss. This vCell filter significantly reduces the quantities of both dry and wet contaminants reaching your gas turbine. The PSY+ filter is designed to provide maximum protection to gas turbines against moisture as well as particulate contaminants. This product is both mist and fog resistant and provides balanced maintenance costs all while improving your MW output. This unique high efficiency final filter made with PRO technology, the clearcurrent PSY+ vCell delivers exceptional gas turbine performance across the filter's service life.

Performance Data

JIS Z8122 Rating	HEPA
EN1822 Rating	E12
ASHRAE 52.2: 2012 Rating	MERV 16
ASHRAE dust-holding capacity (1000 Pa) @ 4250 m ³ /h	416g (0.92 lb)
Operating Temperature Range	-40°C to 70°C (-40°F to 158°F)

Filter Facts

Construction	Robust, impact resistance plastic, ABS (Acrylonitrile butadiene styrene)
Gasket	Foam in place polyurethane, continuous, single piece
Dimensions	595 mm H x 595 mm W x 293 mm D (23.4" H x 23.4" W x 11.5" D)
Clean Weight	10.5 kg (23 lb)
Application	Multi stage static or hybrid filtration, available also in reverse flow configuration

For more information, contact your clearcurrent representative at [CLARCOR Industrial Air](#):
11501 Outlook Street, Suite 100 | Overland Park, KS 66211
T: +1.800.821.2222 | T: +1.816.356.8400 | F: +1.816.353.1873

3 Omega Park | Alton, GU34 2QE | United Kingdom
T: +44(0) 1420 541188 | F: +44(0) 1420 541298
Email: filtration@clarcor.com

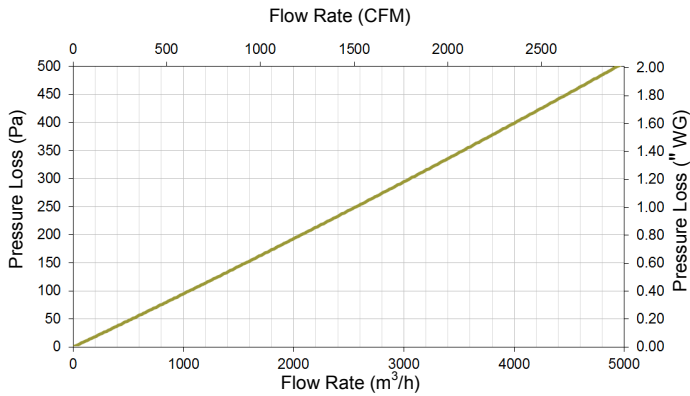
CLARCOR
Industrial Air

©2015 BHA Altair, LLC. All rights reserved. clearcurrent is a registered trademark of BHA Altair, LLC.

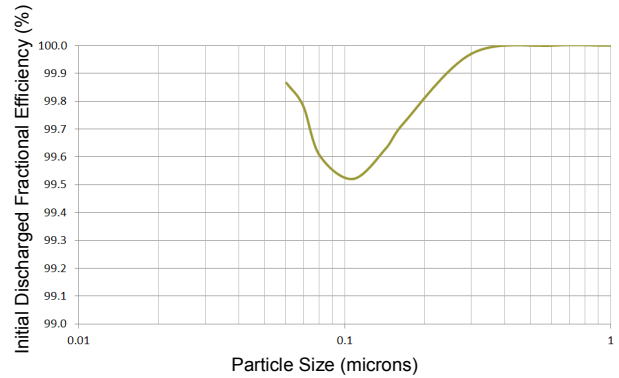
CLEARCPHY+ (11/2015)

clearcurrent® PSY+ vCell

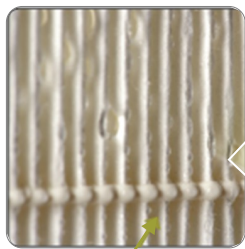
Pressure Loss



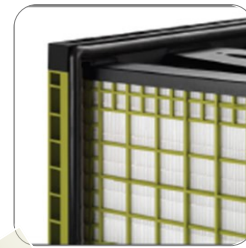
Initial Fractional Efficiency



Key Features



Best in class hydrophobic properties.



Continuous gasket with gasket stop



Fully potted and sealed media packs



Protective grids, ensures wet burst pressure of greater than 25\" WG

Robust ABS Frame

For more information, contact your clearcurrent representative at **CLARCOR Industrial Air**:
 11501 Outlook Street, Suite 100 | Overland Park, KS 66211
 T: +1.800.821.2222 | T: +1.816.356.8400 | F: +1.816.353.1873

3 Omega Park | Alton, GU34 2QE | United Kingdom
 T: +44(0) 1420 541188 | F: +44(0) 1420 541298
 Email: filtration@clarcor.com